



ESCOSTART Soft Starter

RVS-DN – *Digital Soft Starter*

Subject to technical changes, version number: 07b22051



Standard Features

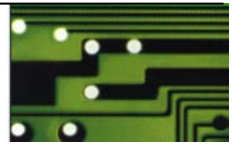
- Ramp-up
- Ramp-down
- Current Limitation
- Full Bridge (6 Thyristors)
- Acceleration/Deceleration Characteristic for Pumps
- Energy Save Function
- Electronic Motor Protection
- 2nd Set of Parameters
- Slow Speed with Electronic Reversing
- Digital, alphanumeric, 4-language LCD-display
- Programmable I/Os
- Operation Visualization by 8 LEDs
- 3 Relays:
 - Operation
 - End of Ramp
 - Fault

ESCOSTART Soft Starter



EUGEN SCHMIDT UND CO
ANTRIEBSTECHNIK





RVS-DN – Soft Starter

ESCOSTART Soft Starter

Specifications

Type of DN-RVS..	8	17	31	44	58	72	85	105	145	170	210	310	390	460	580	820
Rated Output Current (A)	8	17	31	44	58	72	85	105	145	170	210	310	390	460	580	820
Rated Motor Power (kW) at 400 V *	4	7.5	15	22	30	37	45	55	75	90	110	160	200	250	315	450
Size	A					B					C			D		
Width (mm)	153					274					590			623		
Hight (mm)	310					370					500			660		
Depth (mm)	170	217					279					275			290	
Weight (kg)	4.5	6.8	7.5				15					45			65	
Protection Class	IP 20					IP 00										
Power Connections	terminals 16 mm ²							bus bars 4 mm x 20 mm								
Control Connections	switching contacts, terminals 1.5 mm ²															
Voltage Supply	3 x 380 ... 440 V, 50/60 Hz ± 4 %, special voltage on request															
Current Limit	100 ... 400 % of rated motor current															
max. Starts/h	4 starts/h at maximum load; up to 60 starts/h at reduced load															
Acceleration Time	1 ... 30 s															
Deceleration Time	1 ... 30 s															
Initial Voltage	10 ... 50 % of supply voltage															
Functions	full load operation, pump control, auto. frequency adjustment 45-60 Hz, underload, phase reversion, over/undervoltage, external error, additional options															
Protective Functions LED Indication	electronic overload tripping, phase loss detection, overtemperature, thyristor protection, supply voltage, ramp-up/down, operation, energy save															
Relay Output	3 relays: operation, fault indication, end of acceleration (1S 8A, 250V AC)															
Ambient Air Temperature	-10 °C ... +50 °C															
Conformity	CE, UL, cUL, Loyd's, GL (GOST, CCC, Rina, etc. on request)															

* > 450 kW on request



EUGEN SCHMIDT UND CO
ANTRIEBSTECHNIK