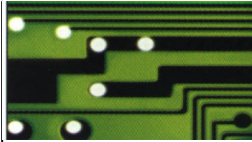


EMC-Filter series TOS-NF for TOSHIBA frequency inverter



EMC-Filter serial TOS-NF





Serial TOS-NFS 3 – 16 A, 1-phase

- Limit class B of EN 55011
- Supply 1-phase
- Nominal current from 3 A to 16 A
- High attenuation from 150 kHz to 30 MHz
- Flat case
- High common mode rejection and push –pull rejection
- Conforming with EN-directive EN 133200

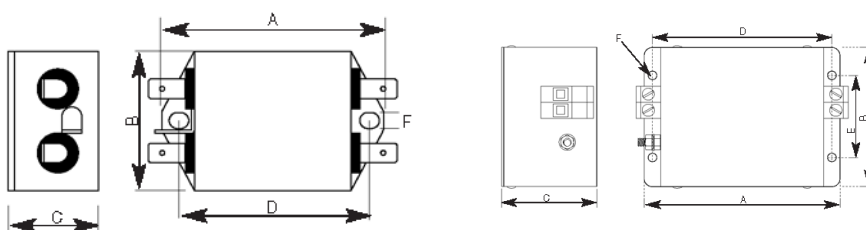


Specifications:

| | |
|-----------------------------|--|
| Rated voltage : | 230 VAC 1-phase / 48 – 62 Hz |
| Rated current : | 1-phase : 3 – 16 A |
| Overload capability : | 4-fold rated current from start, 1,5-fold rated current for 1 min per hour |
| Version : | EN 133200 |
| Design : | Metal housing |
| Mounting : | Mounting plate to loop |
| Environmental temperature : | 50°C |
| Connection : | See schedule |
| Protection class : | IP 20 |

| Type | Rated current | Rated voltage | Leakage current | Approval mark | Connection |
|------------|---------------|---------------|-----------------|---------------|---------------------------------|
| TOS-NFS 3 | 3 A | 230 VAC | 0,4 mA | | Contact pin 6,3mm |
| TOS-NFS 6 | 6 A | 230 VAC | 0,4 mA | UL | Contact pin 6,3mm |
| TOS-NFS 10 | 10 A | 230 VAC | 0,4 mA | UL | Contact pin 6,3mm |
| TOS-NFS 16 | 16 A | 230 VAC | 0,4 mA | | Screw terminal 6mm ² |

Dimensions in mm:



| Type | A | B | C | D | E | F | weight | PE-connection |
|------------|-----|----|----|-----|----|-----|---------|---------------|
| TOS-NFS 3 | 85 | 54 | 40 | 75 | | 5,3 | 0,22 kg | |
| TOS-NFS 6 | 114 | 58 | 45 | 103 | | 4,4 | 0,25 kg | M4 |
| TOS-NFS 10 | 156 | 58 | 45 | 143 | | 5,3 | 0,50 kg | M5 |
| TOS-NFS 16 | 119 | 86 | 58 | 109 | 51 | 4,4 | 0,60 kg | M5 |



Serial TOS-NF 7 – 180 A, 3-phase

- Limit class B on EN 55011
- Supply 3-phase
- Nominal current from 7 A to 180 A
- High attenuation from 150 kHz to 30 MHz
- Small base (book type) and little weight
- Fingerproof terminals
- Conforming with EN-directive EN 133200

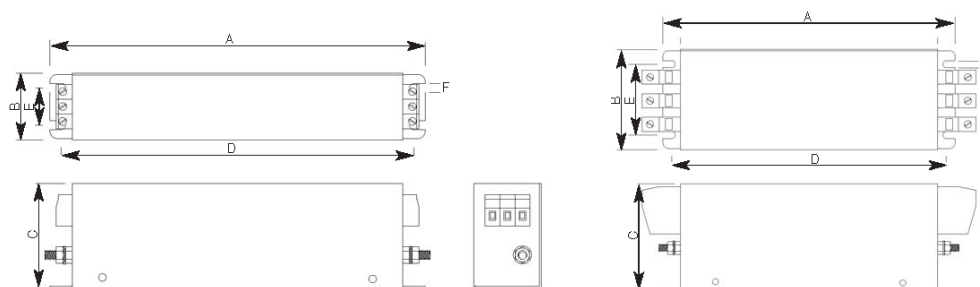


Technische Daten:

| | |
|-----------------------------|--|
| Rated voltage : | 480 VAC 3-phase / 48 – 62 Hz |
| Rated current : | 3-phase : 7 – 180 A |
| Overload capability : | 4-fold rated current from start, 1,5-fold rated current for 1 min per hour |
| Version : | EN 133200 |
| Design : | Metal housing |
| Mounting : | Mounting plate to loop |
| Environmental temperature : | 50°C |
| Connection : | Screw terminals, PE with thread bolt |
| Protection class : | IP 20 |

| Type | Rated current | Rated voltage | Leakage current | Approval mark | Connection |
|------------|---------------|---------------|-----------------|---------------|------------------------------------|
| TOS-NF 7 | 7 A | 480 VAC | 1,0 mA | UL | Screw terminals 4 mm ² |
| TOS-NF 16 | 16 A | 480 VAC | 1,4 mA | UL | Screw terminals 4 mm ² |
| TOS-NF 30 | 30 A | 480 VAC | 1,0 mA | UL | Screw terminals 10 mm ² |
| TOS-NF 42 | 42 A | 480 VAC | 1,2 mA | UL | Screw terminals 10 mm ² |
| TOS-NF 55 | 55 A | 480 VAC | 1,2 mA | UL | Screw terminals 25 mm ² |
| TOS-NF 75 | 75 A | 480 VAC | 1,4 mA | UL | Screw terminals 25 mm ² |
| TOS-NF 100 | 100 A | 480 VAC | 1,4 mA | UL | Screw terminals 50 mm ² |
| TOS-NF 130 | 130 A | 480 VAC | 1,0 mA | UL | Screw terminals 50 mm ² |
| TOS-NF 180 | 180 A | 480 VAC | 1,4 mA | UL | Screw terminals 95 mm ² |

Dimensions in mm:



| Type | A | B | C | D | E | F | weight | PE-connection |
|------------|-----|-----|-----|-----|-----|-----|--------|---------------|
| TOS-NF 7 | 190 | 40 | 70 | 180 | 20 | 4,5 | 0,5 kg | M5 |
| TOS-NF 16 | 250 | 45 | 70 | 220 | 25 | 5,4 | 0,8 kg | M5 |
| TOS-NF 30 | 270 | 50 | 85 | 240 | 30 | 5,4 | 1,0 kg | M5 |
| TOS-NF 42 | 310 | 50 | 85 | 280 | 30 | 5,4 | 1,0 kg | M6 |
| TOS-NF 55 | 250 | 85 | 90 | 220 | 60 | 5,4 | 1,6 kg | M6 |
| TOS-NF 75 | 270 | 80 | 135 | 240 | 60 | 6,5 | 2,4 kg | M6 |
| TOS-NF 100 | 270 | 90 | 150 | 240 | 65 | 6,5 | 3,6 kg | M10 |
| TOS-NF 130 | 270 | 90 | 150 | 240 | 65 | 6,5 | 3,6 kg | M10 |
| TOS-NF 180 | 380 | 120 | 170 | 350 | 102 | 6,5 | 4,2 kg | M10 |



Serial TOS-NF 250 – 1600 A, 3-phase

- Limit class B on EN 55011
- Supply 3-phase
- Nominal current from 250 A to 1600 A
- High attenuation from 150 kHz to 30 MHz
- Compact configuration
- Fingerproof as option
- Confirming with EN-directive EN 133200

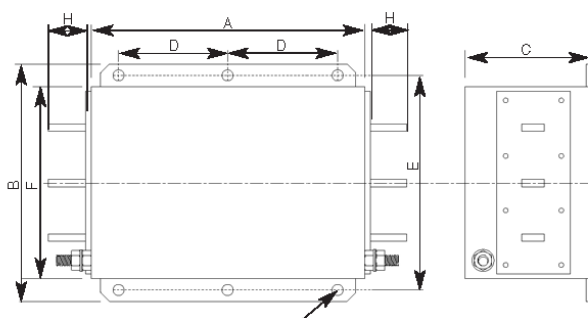


Specifications:

| | |
|-----------------------------|--|
| Rated voltage : | 480 VAC 3-phase / 48 – 62 Hz |
| Rated current : | 3-phase : 250 – 1600 A |
| Overload capability : | 4-fold rated current from start, 1,5-fold rated current for 1 min per hour |
| Version : | EN 133200 |
| Design : | Metal housing |
| Mounting : | Mounting plate to loop |
| Environmental temperature : | 50°C |
| Connection : | Copper busbar, PE with thread bolt |
| Protection class : | IP 20 |

| Type | Rated current | Rated voltage | Leakage current | Approval mark | Connection |
|-------------|---------------|---------------|-----------------|---------------|-------------------|
| TOS-NF 250 | 250 A | 480 VAC | 1,1 mA | UL | Copper busbar M12 |
| TOS-NF 300 | 300 A | 480 VAC | 1,1 mA | UL | Copper busbar M12 |
| TOS-NF 400 | 400 A | 480 VAC | 1,1 mA | UL | Copper busbar M12 |
| TOS-NF 500 | 500 A | 480 VAC | 1,1 mA | UL | Copper busbar M12 |
| TOS-NF 600 | 600 A | 480 VAC | 1,1 mA | UL | Copper busbar M12 |
| TOS-NF 800 | 800 A | 480 VAC | 1,2 mA | UL | Copper busbar M12 |
| TOS-NF 1000 | 1000 A | 480 VAC | 1,2 mA | UL | Copper busbar M12 |
| TOS-NF 1600 | 1600 A | 480 VAC | 1,5 mA | UL | Copper busbar M12 |

Dimensions in mm:



| Type | A | B | C | D | E | F | G | H | weight | PE-connection |
|-------------|-----|-----|-----|-----|-----|-----|----|----|---------|---------------|
| TOS-NF 250 | 300 | 260 | 135 | 120 | 235 | 210 | 12 | 40 | 12,2 kg | M12 |
| TOS-NF 300 | 300 | 260 | 135 | 120 | 235 | 210 | 12 | 40 | 12,5 kg | M12 |
| TOS-NF 400 | 300 | 260 | 135 | 120 | 235 | 210 | 12 | 40 | 13,0 kg | M12 |
| TOS-NF 500 | 300 | 260 | 135 | 120 | 235 | 210 | 12 | 40 | 14,0 kg | M12 |
| TOS-NF 600 | 300 | 260 | 135 | 120 | 235 | 210 | 12 | 40 | 15,0 kg | M12 |
| TOS-NF 800 | 350 | 280 | 170 | 145 | 255 | 230 | 12 | 50 | 24,0 kg | M12 |
| TOS-NF 1000 | 350 | 280 | 170 | 145 | 255 | 230 | 12 | 50 | 24,0 kg | M12 |
| TOS-NF 1600 | 400 | 300 | 160 | 170 | 275 | 250 | 12 | 90 | 32,0 kg | M12 |