

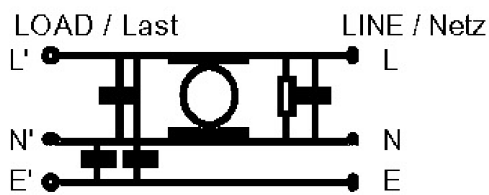
EMC Footprint Filter

Series TOS-FPFA

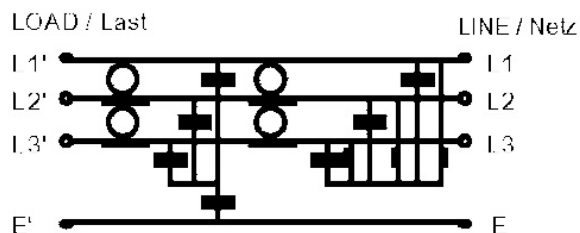
Low leakage current undercarriage filter for
TOSHIBA frequency inverter



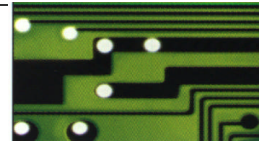
one-phase



three-phase



EMC Filter TOS-FPFA



Serial TOS-FPFA 9 - 22 A, 1-phase



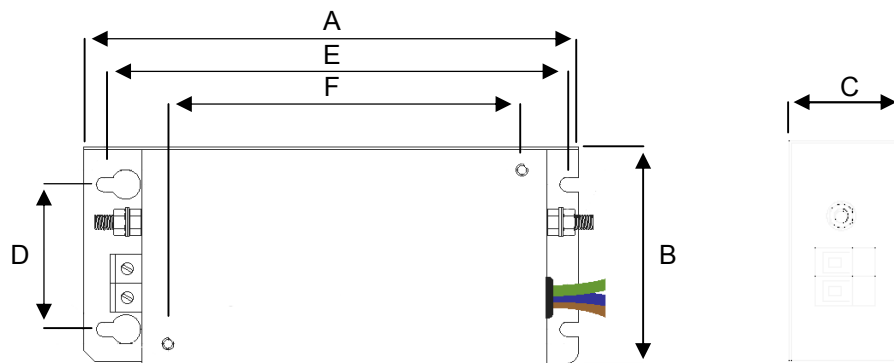
- Power supply 1-phase
- Nominal current from 9 A to 22 A
- High attenuation from 150 kHz to 30 MHz
- Flat case
- High common mode rejection and push-pull rejection
- Conforming with EN-directive EN 133200

Specifications:

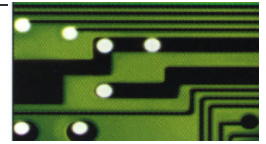
Rated voltage :	250 VAC 1-phase / 48 – 62 Hz
Rated current :	1-phase : 9 – 22 A
Overload capability :	4-fold rated current from start, 1,5-fold rated current for 1 min per hour
Version :	EN 133200
Design :	Metal housing
Mounting :	Mounting plate to loop
Environmental temperature :	50°C
Connection :	See schedule
Protection class :	IP 20

Type	Rated current	Rated voltage	Av. leakage current	Max. leakage current	Connection
TOS-FPFA 0009	9 A	250 VAC	3 μ A	0,2 mA	Screw terminals
TOS-FPFA 0016	16 A	250 VAC	3 μ A	0,2 mA	Screw terminals
TOS-FPFA 0022	22 A	250 VAC	5 μ A	0,4 mA	Screw terminals

Dimensions in mm:



Type	A	B	C	D	E	F	PE-connection
TOS-FPFA 0009	170	76	40	50	158	121,5	M5
TOS-FPFA 0016	170	109	45	80	158	121,5	M5
TOS-FPFA 0022	207	142	50	140	195	157	M5



Serial TOS-FPFA 9 - 22 A, 3-phase



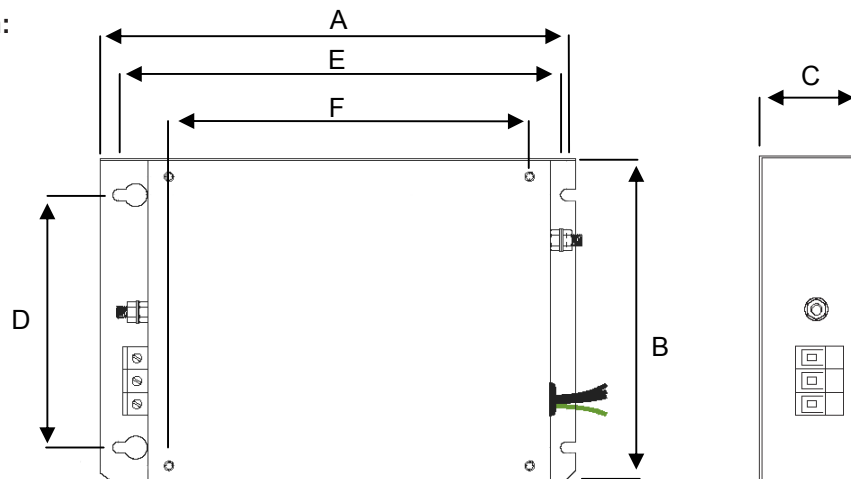
- Power supply 3-phase
- Nominal current from 6 A to 40 A
- High attenuation from 150 kHz to 30 MHz
- Flat case
- High common mode rejection and push-pull rejection
- Conforming with EN-directive EN 133200

Specifications:

Rated voltage :	480 VAC 3-phase / 48 – 62 Hz
Rated current :	3-phase : 6 – 40 A
Overload capability :	4-fold rated current from start, 1,5-fold rated current for 1 min per hour
Version :	EN 133200
Design :	Metal housing
Mounting :	Mounting plate to loop
Environmental temperature :	50°C
Connection :	See schedule
Protection class :	IP 20

Type	Rated current	Rated voltage	Av. leakage current	Max. leakage current	Connection
TOS-FPFA 0006	9 A	480 VAC	3 μ A	0,2 mA	Screw terminals
TOS-FPFA 0012	12 A	480 VAC	3 μ A	0,2 mA	Screw terminals
TOS-FPFA 0025	25 A	480 VAC	5 μ A	0,4 mA	Screw terminals
TOS-FPFA 0040	40 A	480 VAC	5 μ A	0,4 mA	Screw terminals

Dimensions in mm:



Type	A	B	C	D	E	F	PE-connection
TOS-FPFA 0006	170	109	45	80	158	121,5	M5
TOS-FPFA 0012	207	142	45	110	195	157	M5
TOS-FPFA 0025	260	180	50	150	248	210	M5
TOS-FPFA 0040	350	245	55	210	335	295	M5